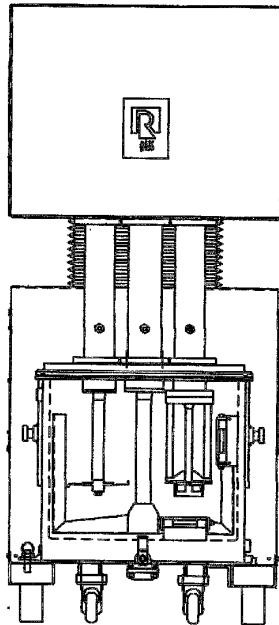


VMC 10-200 Specifications and Dimensions

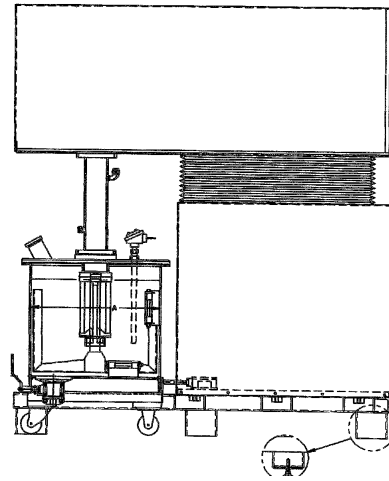
STANDARD FEATURES

- Change can design for use with multiple mix vessels.
- Mix vessel locating and locking device
- Vertical lift design with push button controls for raising and lowering agitators.
- Agitator drives and lift system are fully sheathed by the mixer enclosure.
- Wetted parts are stainless steel type 304, polished to an 80 grit finish.
- Stainless steel type 304 mix vessel cover.
- Non-stainless steel components are finished with a durable two-component paint.
- Up to three independently driven agitators including an Anchor, High Speed Dispenser and High Shear Rotor/Stator Mixer.
- Drive motors are TEFC induction motors.
- Safety limit switch to prevent operation of the agitator drives when the agitators are raised or when the mix vessel is removed.
- Agitator motors and limit switches are pre-wired to a common junction box within the lift enclosure.



OPTIONAL FEATURES

- Wetted parts of stainless steel type 316, Hastelloy or other special alloys.
- Mixer sheathing available in polished stainless steel.
- Vacuum and/or internal pressure designs.
- Sanitary designs with special seals, polish, and sanitary connections.
- Sight ports, inlet and outlet nozzles and flush tank discharge valves are available.
- Temperature probes, pressure transducers, and other batch sensors can be included.
- Agitator drive motors, safety limit switches, controls, and mixer pre-wiring available in explosion proof configurations.
- Mix vessels can be jacketed for heating/cooling and internally machined for use with a Ross Discharge System.
- Mix vessels are available on casters and special raised bases.
- Control systems are available including variable speed systems and PLC based controllers.
- Complete systems can include controls, vacuum pump, heater/chiller and other auxiliary equipment.
- Custom agitators and other special features can be incorporated into the design.



Model	Mixing Capacity	Full Holding	Anchor Speed	Anchor HP	Disp Speed	Disp HP	Rtr/Str Speed	Rtr/Str HP	Wt.	Vessel OAH	Vessel Dia.	Vessel Inside Height	Mixer Lowered OAH	Mixer Raised OAH	Mixer OAW	Mixer OAL
VMC-10	2 - 10 Gal	15 Gal	28-112	5	850-3400	5	900-3600	7 1/2	2500	24 1/2	18	13 1/2	65	80	32 1/2	62
VMC-40	8 - 40 Gal	47 Gal	20-80	7 1/2	638-2550	10	900-3600	10	4200	33 1/2	25	22	84	107	35 1/2	74
VMC-100	10 - 100 Gal	115 Gal	15-58	15	318-1750	30	900-3600	30	9000	43 3/4	34 1/2	28 1/2	114 1/2	149	44	96
VMC-200	30 - 200 Gal	225 Gal	11-44	15	423-1270	50	450-1800	50	13500	52	44	34	132	166	50	115

All dimensions are in inches

VMC200 0301



Charles Ross & Son Company

P.O.Box 12308, 710 Old Willets Path, Hauppauge, NY 11788 - Tel: 1-631-234-0500 - Fax: 1-631-234-0691

Website: www.mixers.com - Email: sales@mixers.com